





**Andreu World** America

**Sevilla** Vicente Soto



**Andreu World** America



	Model number	Description	W	D	H	SH	AH	Weight	COM	COL sq.ft.
	SO 2740 Stacks 6	Arm chair. Upholstered seat and back. Wooden arms. Chromed metal frame.	23.25	23.25	30.5	18.75	25.5	28	1.25	21.75
	SO 2742 Stacks 6	Arm chair. Upholstered seat and back. Raftancore back and wooden arms. Chromed metal frame.	23.25	23.25	30.5	18.75	25.5	28	0.7	12

Measurements ± 0.25 in  
Measurements inches (in.), yards (yd) , square feet (sq. ft.)

All models are protected by international patent. This publication may not be reproduced in whole or in part in any manner whatsoever without the written permission of the Publisher.

Andreu World America LLC.

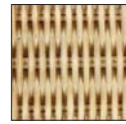
222 Merchadise Mart Plaza  
Suite 10-132  
Chicago, IL 60654  
Phone 312.464.0900  
Fax 312.646.0907  
Toll Free 1.800.632.5272  
info@andreuworldamerica.com  
www.andreuworldamerica.com

When ordering, please specify:

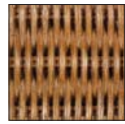
- a) Model name and number.
- b) Wood finish number.  
Standard beech finishes: 300, 302, 310, 319, 322, 325, 336, 337, 339, 364, 369, 370, 372, 381, 380, 641, 830, 840.
- c) Describe COM fabric, including manufacturer and model number.

Rattancore back  
color samples

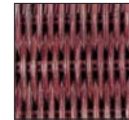
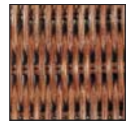
▼ Natural 494



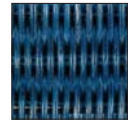
▼ Cherry 491



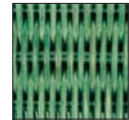
▼ Mahogany 490



▲ Dark red 495



▲ Blue 492



▲ Green 493

**Special finish**  
Matt chrome



**Standard finish**  
Bright chrome



## Sevilla Vicente Soto

Stackable armchair  
with bright chrome  
iron frame,  
upholstered seat  
and solid

beechwood arms.  
The collection  
offers an  
upholstered or  
woven rattan back

in 6 color options.  
The frame is also  
available in  
optional matt  
chrome.



**Andreu World** America



SO 2740



SO 2742



SO 2742 Rattancore back